

19mm [3/4"] SOLID WOOD
DOOR EDGE
[SPECIES TO MATCH FACE]

38mm [1 1/2"] SCL
STILE

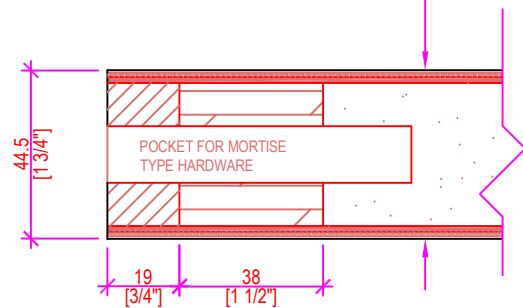
RAILS:
76mm [3"] SCL TOP & BOTTOM RAILS

AVAILABLE DOOR SIZES:

Most Veneers (restricted by species) 54"x126"
PL (P.Lam)(restricted by manufacturer) 60"x144"

Standard Thickness - 1-3/8" or 1-3/4"

DOOR CONSTRUCTION DETAILS
DOOR FACE TO CUSTOMER SPEC.
1.6mm [1/16"] COMPOSITE CROSS-BANDING
SOLID LEAD **
DOOR CORE CONSTRUCTION LAYER
SOLID LEAD **
1.6mm [1/16"] COMPOSITE CROSS-BANDING
DOOR FACE TO CUSTOMER SPEC.



A-A PARTIAL PLAN SECTION
SCALE: 6" = 1'-0"

NET DOOR HEIGHT

Lites (Window Cut-outs) will
require Lead-Lined Metal Lite
Kits to maintain continuous
Radiology protection. Glass (by
others) thickness is required at
time of order or will be assumed
6mm, if not otherwise specified.
See 115-L3 Glazing Kit

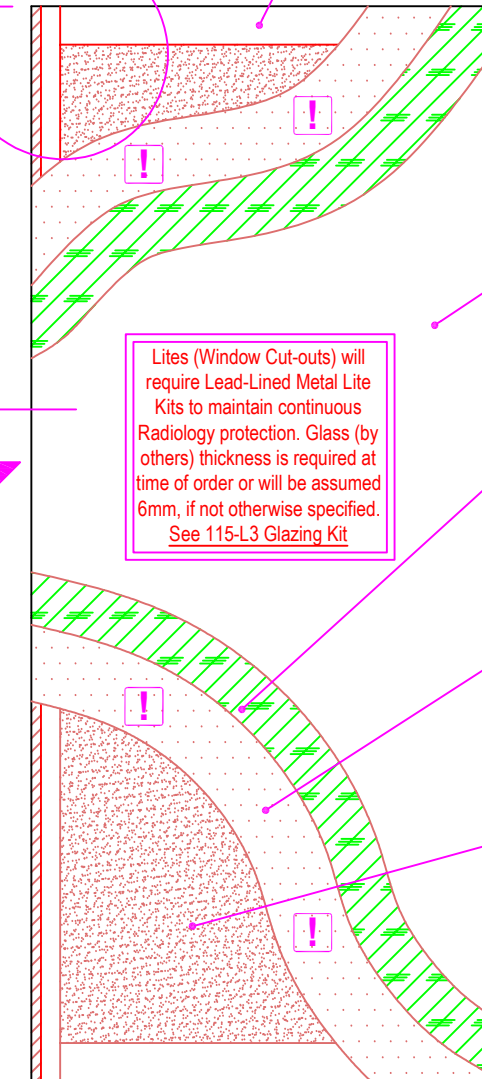
DOOR FACE:
WOOD VENEER SPECIES OR
PLASTIC LAMINATE [GP thickness] OR
ALTERNATE DOOR FINISH [as requested]

CROSSBAND:
1.6mm [1/16"] COMPOSITE HDF

RADIOLOGY PROTECTION:
SOLID LEAD LAYER
BOTH SIDES OF DOOR
[thickness as requested]

**Standard LEAD Thickness
0.8mm [1/32"] (2lbs) - 2 Layers
Available Upon Request
0.5mm [1/64"] (1lbs) - 2 Layers
1.6mm [1/16"] (4lbs) - 2 Layers

CORE:
PARTICLE BOARD DOOR CORE
(ANSI A208.1 GRADE LD-1)



NET DOOR WIDTH

 <small>Manufacturers of Fine Quality Millwork Doors & Paneling</small> 1150 Sanford Street Ph: (204) 786-1411 Fax: (204) 786-2634 Winnipeg, MB R3E 2Z9 www.dormonddoors.com	Date: MAR 10, 2021
	Revision:
Drawing: DPC-7-LL DUAL LEAD-LINED	
Drawn By: A.D.	Sheet: 1 of 1