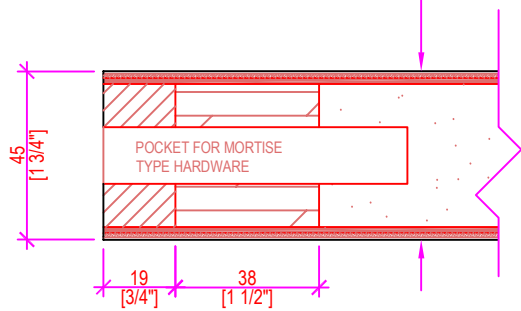


19mm [3/4"] SOLID WOOD
DOOR EDGE
[POPLAR]

38mm [1 1/2"] SCL
STILE

AVAILABLE DOOR SIZES:
 Hardboard (without face joints) 60"x96" or 48"x120"
 Hardboard (with face joints) 60"x144"
 Standard Thickness - 1-3/8" or 1-3/4"

DOOR CONSTRUCTION DETAILS
 3mm [1/8"] HARDBOARD DOOR FACE
 SOLID LEAD **
 DOOR CORE CONSTRUCTION LAYER
 SOLID LEAD **
 3mm [1/8"] HARDBOARD DOOR FACE.



A-A PARTIAL PLAN SECTION
SCALE: 6" = 1'-0"

RAILS:
76mm [3"] SCL TOP & BOTTOM RAILS

DOOR FACE:
3mm [1/8"] HARDBOARD

Lites (Window Cut-outs) will require Lead-Lined Metal Lite Kits to maintain continuous Radiology protection. Glass (by others) thickness is required at time of order or will be assumed 6mm, if not otherwise specified. See 115-L3 Glazing Kit

RADIOLOGY PROTECTION:
SOLID LEAD LAYER
BOTH SIDES OF DOOR
[thickness as requested]

**Standard LEAD Thickness
 0.8mm [1/32"] (2lbs) - 2 Layers
 Available Upon Request
 0.5mm [1/64"] (1lbs) - 2 Layers
 1.6mm [1/16"] (4lbs) - 2 Layers

CORE:
PARTICLE BOARD DOOR CORE
(ANSI A208.1 GRADE LD-1)

NET DOOR HEIGHT

NET DOOR WIDTH

 <small>Manufacturers of Fine Quality Millwork Doors & Paneling</small> 1150 Sanford Street Ph: (204) 786-1411 Fax: (204) 786-2634 Winnipeg, MB R3E 2Z9 www.dormonddoors.com	Date: MAR 10, 2021
	Revision:
Drawing: DPC-5-LL DUAL LEAD-LINED	
Drawn By: A.D.	Sheet: 1 of 1