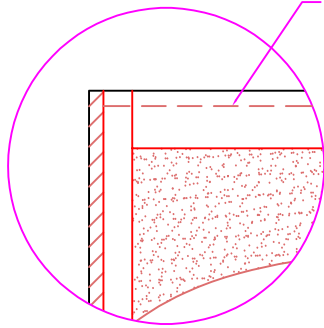
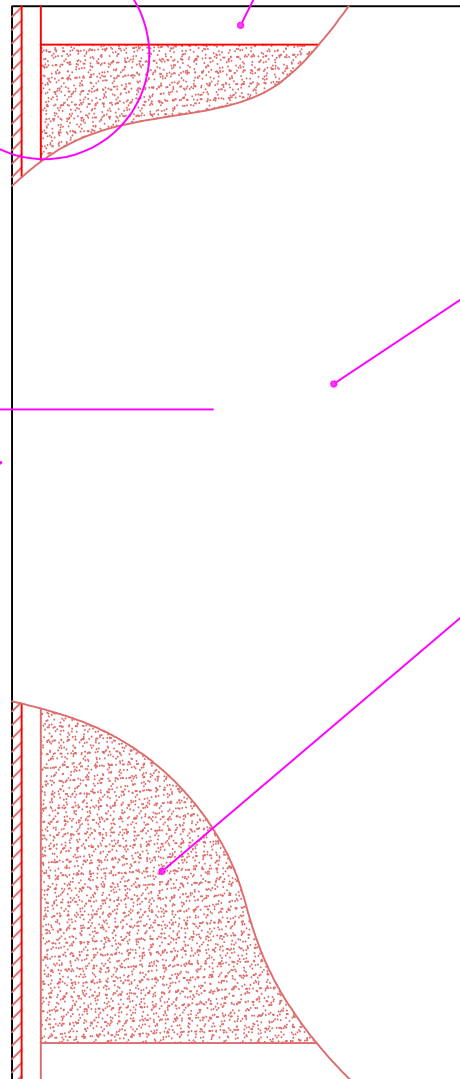


**SOFTWOOD CAPS**  
[AVAILABLE UPON REQUEST]



**RAILS:**  
76mm [3"] SCL TOP & BOTTOM RAILS



**DOOR FACE:**  
3mm [1/8"] **HARDBOARD**

**CORE:**  
PARTICLE BOARD DOOR CORE  
(ANSI A208.1 GRADE LD-1)

NET DOOR HEIGHT

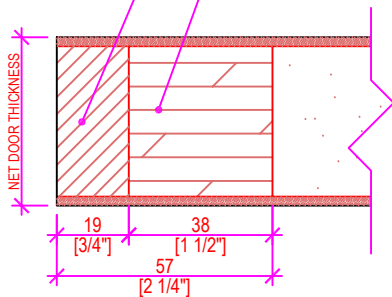
NET DOOR WIDTH

**AVAILABLE DOOR SIZES:**  
Hardboard (without face joints) 60"x96" or 48"x120"  
Hardboard (with face joints) 60"x144"  
  
Standard Thickness - 1-3/8" or 1-3/4"  
Thickness Available - 1" to 2-1/2"

**DOOR EDGES:**  
8mm [5/16"] SOLID WOOD  
[POPLAR]

**STILES:**  
38mm [1-1/2"] SCL

**STANDARD EDGE DETAIL**  
#2 (AWMAC Type 'A')



**A-A DOOR EDGE DOOR SECTION**  
SCALE: 6" = 1'-0"

 <small>Manufacturers of Fine Quality Millwork Doors &amp; Paneling</small> 1150 Sanford Street Ph: (204) 786-1411 Fax: (204) 786-2634 Winnipeg, MB R3E 2Z9 www.dormonddoors.com	Date: MAR 30, 2021
	Revision:
Drawing: DPC-3 SOLID CORE	
Drawn By: A.D.	Sheet: 1 of 1