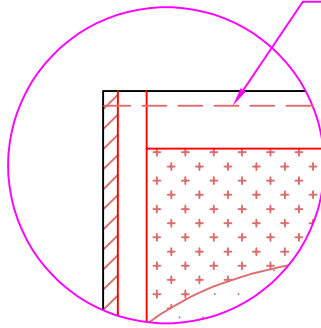


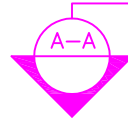
**SOFTWOOD CAPS**  
[AVAILABLE UPON REQUEST]



**RAILS:**  
76mm [3"] SCL TOP & BOTTOM RAILS

**AVAILABLE DOOR SIZES:**  
Most Veneers (restricted by species) 60"x96" or 48"x120"  
PL (P.Lam)(restricted by manufacturer) 60"x144"  
Standard Thickness - 1-3/8" or 1-3/4"

**NET DOOR HEIGHT**



Lites (Window Cut-outs) NOT PERMITTED in DHC or LITExx door constructions

**DOOR FACE:**  
WOOD VENEER SPECIES OR PLASTIC LAMINATE [GP THICKNESS] OR ALTERNATE DOOR FINISH [as requested]

**CROSSBAND:**  
1.6mm [1/16"] COMPOSITE HDF  
\*\*3mm [1/8"] COMPOSITE HDF for door widths > 48"

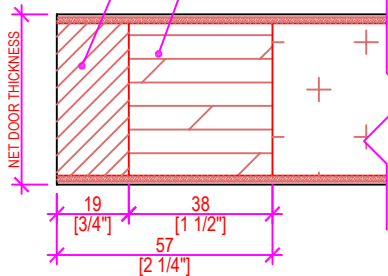
**BALANCE SHEET:**  
MATERIAL TO MATCH DOOR FACE MATERIAL THICKNESS

**CORE:**  
75 Kpa EXPANDED POLYSTYRENE (EPA) STYROFOAM CORE

**DOOR EDGES:**  
19mm [3/4"] min. SOLID WOOD [SPECIES TO MATCH FACE]

**STILES:**  
38mm [1-1/2"] SCL

**STANDARD EDGE DETAIL #2 (AWMAC Type 'A')**



**NET DOOR WIDTH**

**A-A DOOR EDGE DOOR SECTION**  
SCALE: 6" = 1'-0"

 <small>Manufacturers of Fine Quality Millwork Doors &amp; Paneling</small> 1150 Sanford Street Ph: (204) 786-1411 Fax: (204) 786-2634 Winnipeg, MB R3E 2Z9 www.dormonddoors.com	Date: MAR 10, 2021
	Revision:
Drawing: DHC-7 FOAM CORE	
Drawn By: A.D.	Sheet: 1 of 1