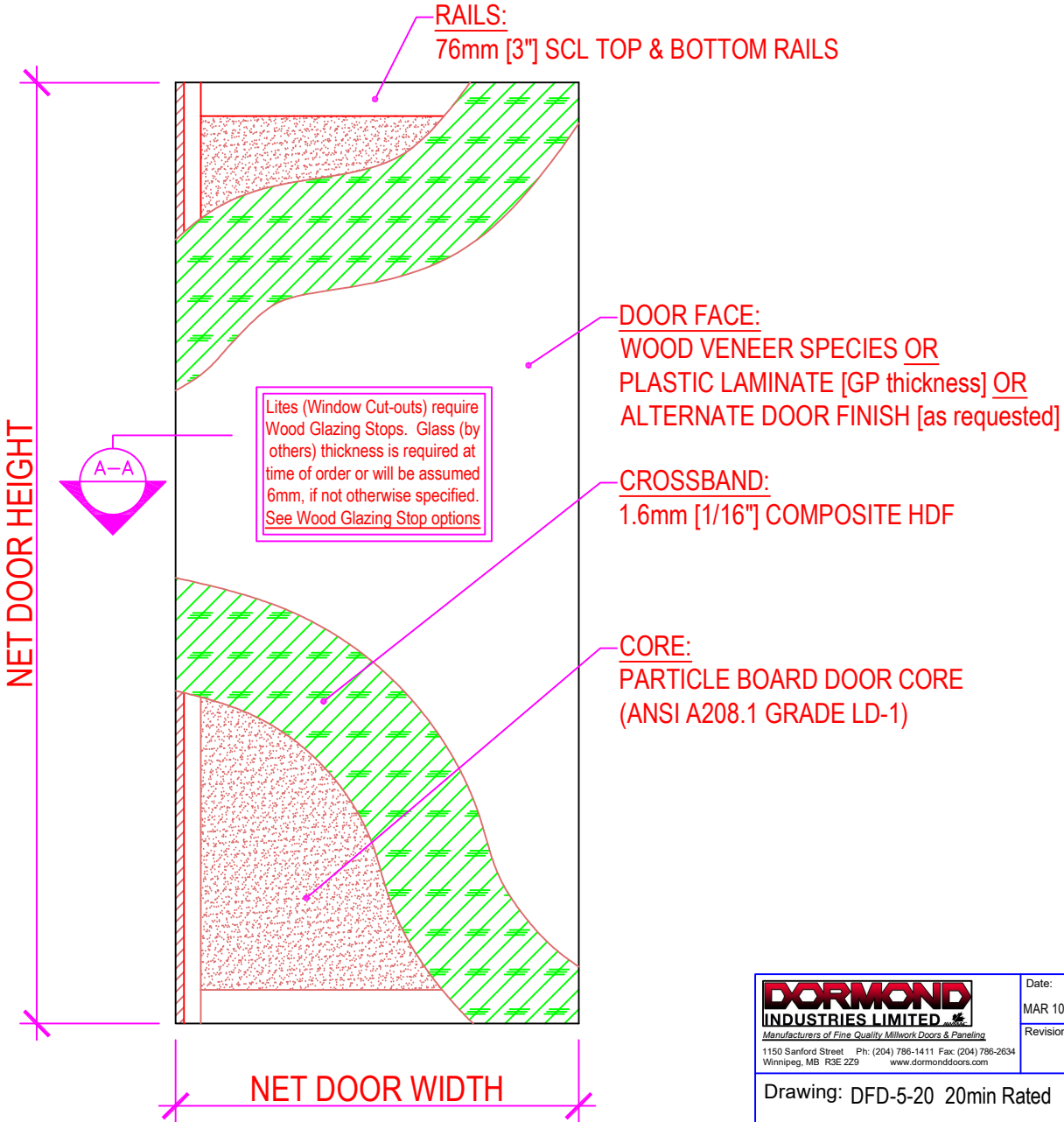


20min FIRE-RATED

**AVAILABLE DOOR SIZES:**  
 Single Swing 4/0 x 9/0  
 Pairs - Conventional 8/0 x 9/0  
 Pairs - Double Egress 8/0 x 9/0

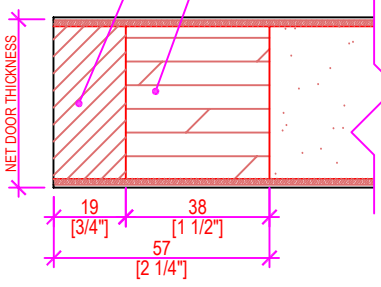
Standard Thickness - 1-3/4"  
 Thickness Available - Up to 2-1/4"



**DOOR EDGES:**  
8mm [5/16"] min. SOLID WOOD  
[SPECIES TO MATCH FACE]

**STILES:**  
38mm [1-1/2"] SCL

**STANDARD EDGE DETAIL**  
#2 (AWMAC Type 'A')  
#1 (AWMAC Type 'D') AVAILABLE UPON REQUEST



**A-A DOOR EDGE DOOR SECTION**  
SCALE: 6" = 1'-0"

 <small>Manufacturers of Fine Quality Millwork Doors &amp; Paneling</small> 1150 Sanford Street Ph: (204) 786-1411 Fax: (204) 786-2634 Winnipeg, MB R3E 2Z9 www.dormonddoors.com	Date: MAR 10, 2021
	Revision:
Drawing: DFD-5-20 20min Rated	
Drawn By: A.D.	Sheet: 1 of 1